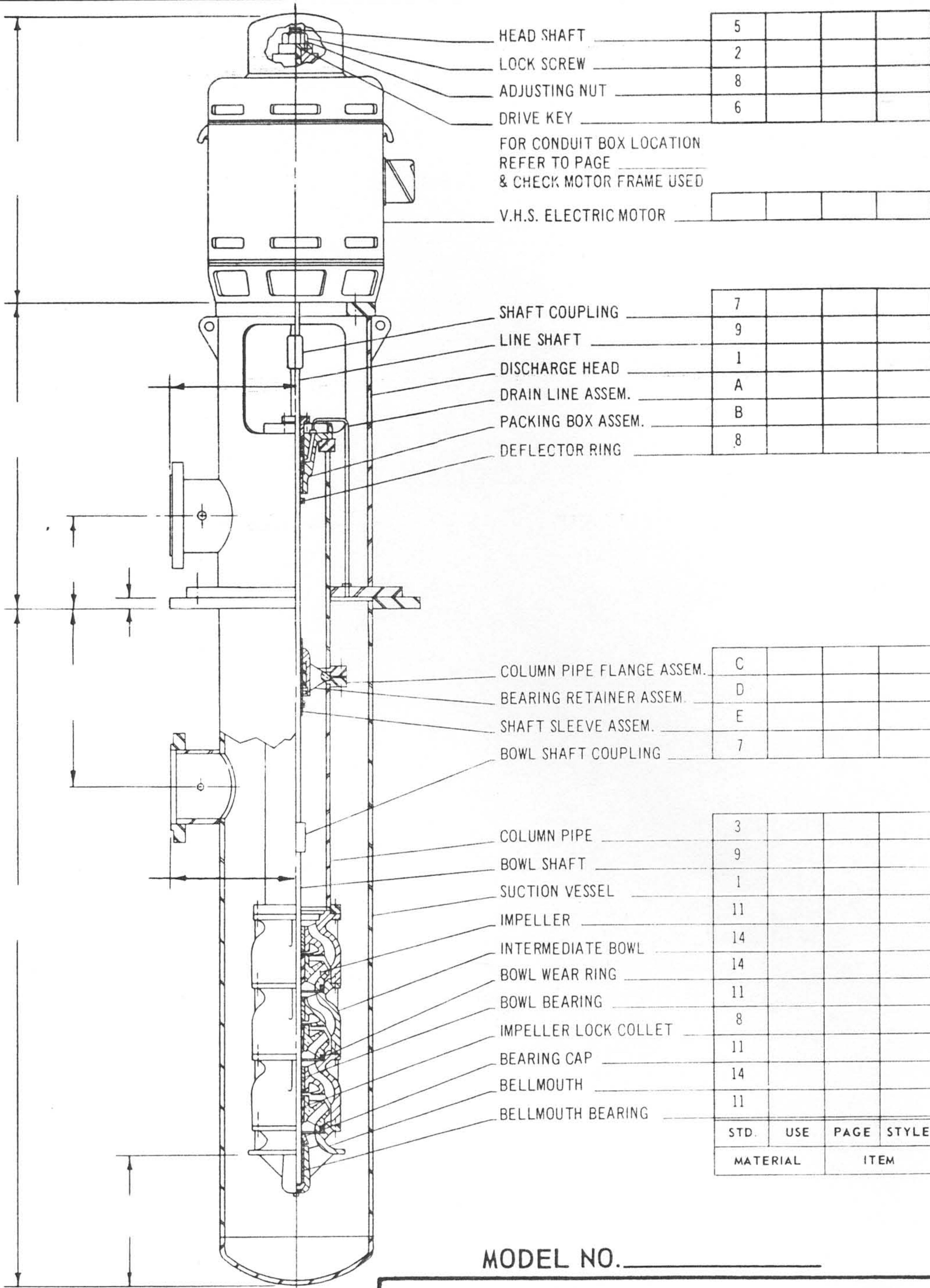


# Verti-Line PUMP



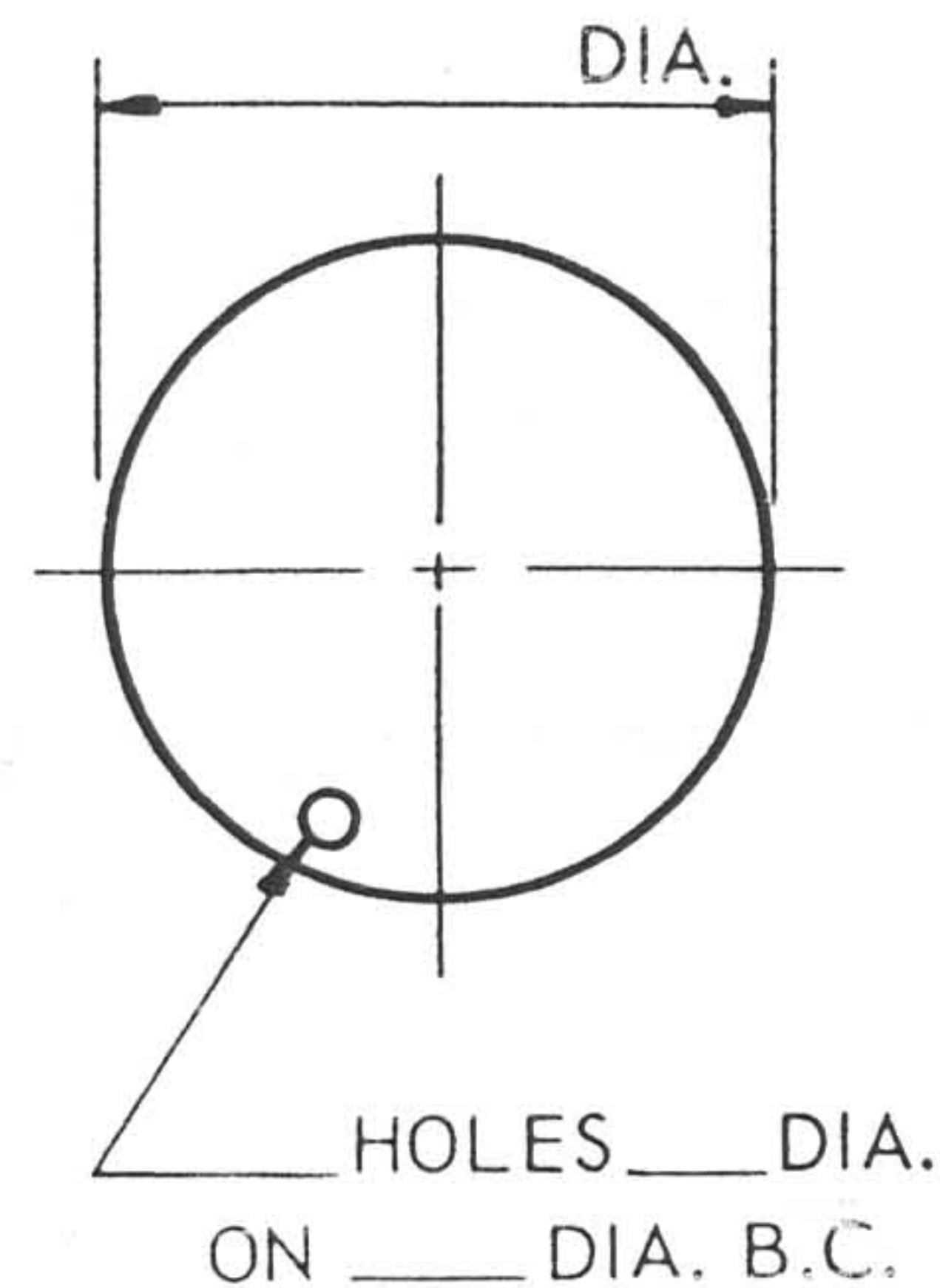
SECTION 40  
PAGE 546  
DATE 11/30/  
9/15/6

## OPEN LINESHAFT - FLANGED COLUMN

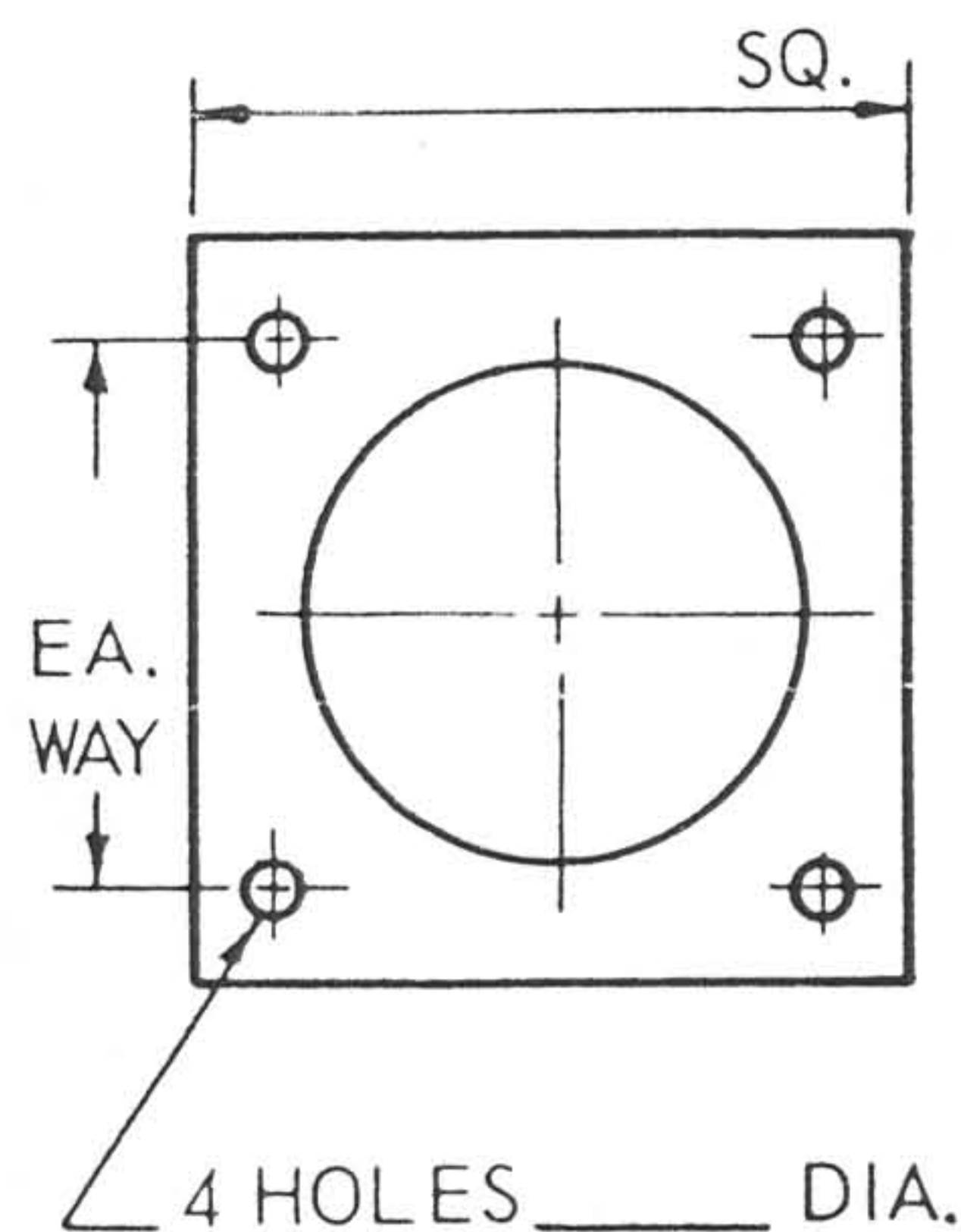


SEE PUMP MATERIAL SPECIFICATION INDEX BELOW

### ROUND BASE PLATE DIMENSIONS



### SQUARE BASE PLATE DIMENSIONS



**NOTE:**

USE CERTIFICATION OR APPROVAL STAMP ON REVERSE SIDE.

FLAT FACE DISCHARGE AND SUCTION FLANGES AVAILABLE ONLY WHEN REQUESTED.

MODEL NO. \_\_\_\_\_

### PUMP MATERIAL SPECIFICATIONS INDEX

1	Steel ASTM A 7	7	Steel SAE 1144	13	Neoprene	19	A	Refer to page
2	Steel SAE 1018 GR 2	8	Steel SAE 1113	14	Moly Iron Class 35	20	B	Refer to page
3	Steel ASA A120 GR B	9	Steel AISI 416	15		21	C	Refer to page
4	Steel ASTM A 107	10	Coated Steel	16		22	D	Refer to page
5	Steel SAE 1045	11	Bronze SAE 40	17		23	E	Refer to page
6	Steel SAE 1019	12	Rubber	18		24	F	Refer to page

## LAYNE & BOWLER PUMP COMPANY

CITY OF INDUSTRY, CALIFORNIA (GREATER LOS ANGELES) PUENTE AVENUE AT VALLEY BOULEVARD ZIP MAIL BOX 1300, LA PUENTE, CALIFORNIA 91747

CUST. \_\_\_\_\_ L & B QUOTE (or order) NO. \_\_\_\_\_  
 \_\_\_\_\_ NO. \_\_\_\_\_ SPEC. \_\_\_\_\_ ITEM. \_\_\_\_\_  
 USER \_\_\_\_\_ TOTAL LGTH. \_\_\_\_\_ TOTAL WT. \_\_\_\_\_  
 \_\_\_\_\_ NO. \_\_\_\_\_ BY \_\_\_\_\_ DATE \_\_\_\_\_