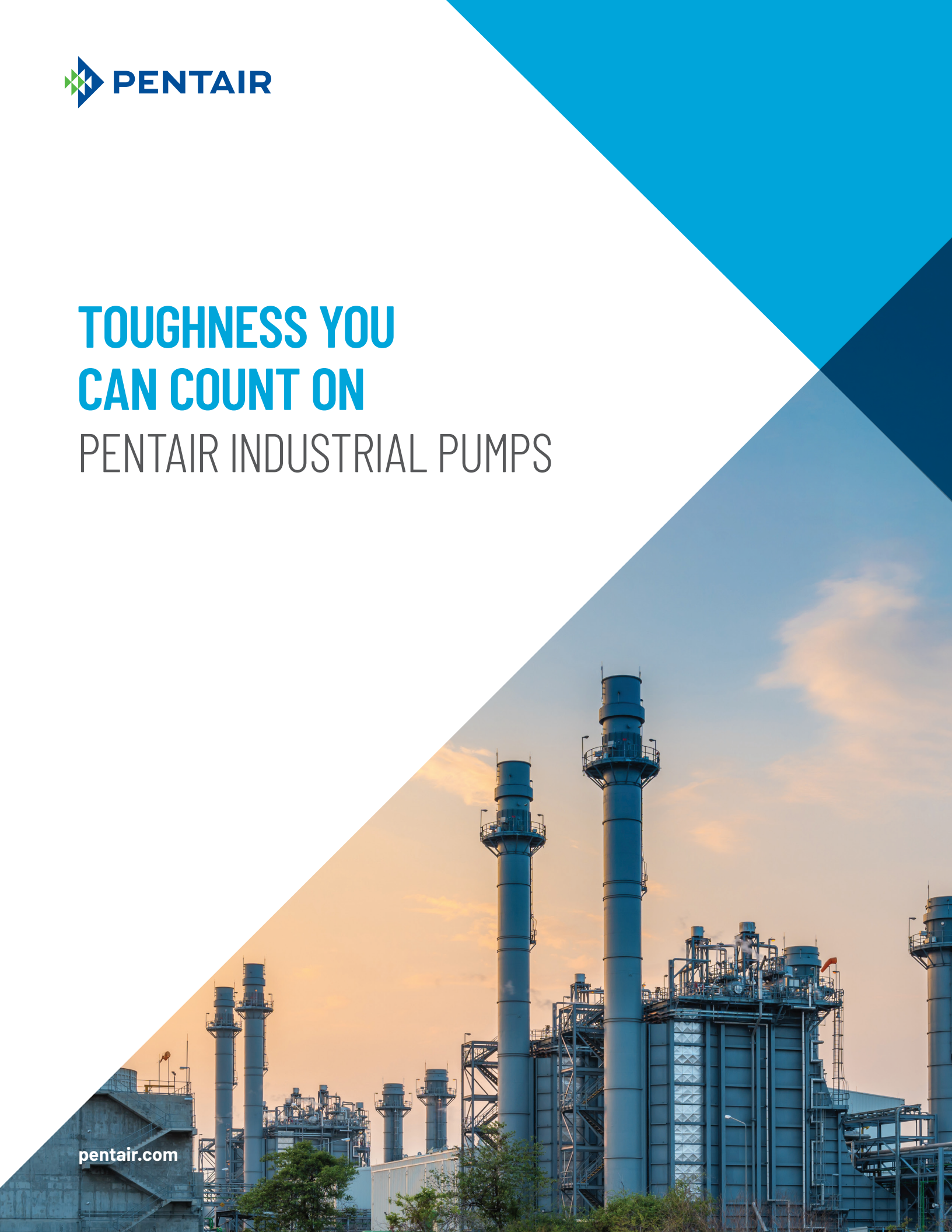




# TOUGHNESS YOU CAN COUNT ON

## PENTAIR INDUSTRIAL PUMPS

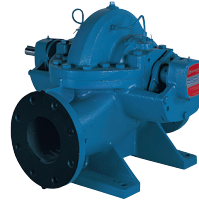
[pentair.com](https://www.pentair.com)



# APPLICATIONS

## STRONG. DEPENDABLE. RELIABLE.

You have a lot depending on your industrial pumps. You need to count on them to do their jobs, consistently and reliably, so the systems you're responsible for stay up and running.



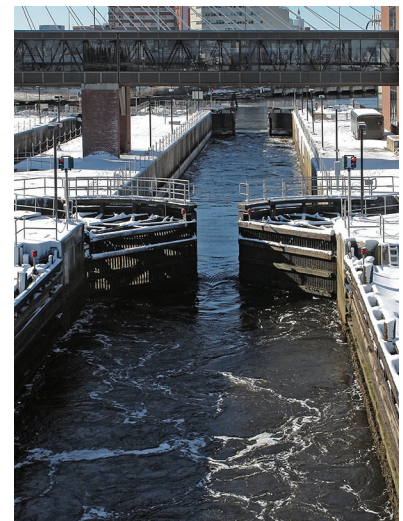
Pentair has built a reputation for excellence by offering rugged, heavy duty pumps designed to work in demanding applications. More importantly, we've built that reputation through service to our customers. Through our simple online specification tools and dedicated customer support teams, our mission is to keep your system running at peak performance.



### COOLING TOWER PUMPS

Pentair® Fairbanks Nijhuis® Vertical Turbine and Pentair Aurora® Split Case Pumps can handle a broad spectrum of Industrial Water applications:

- ◆ Raw water intake
- ◆ Liquid transfer
- ◆ Cooling water circulation
- ◆ Booster service
- ◆ Storm water
- ◆ Flood control
- ◆ Marine
- ◆ Process services
- ◆ Volatile fluids
- ◆ Condensate
- ◆ Fuel pumps
- ◆ Mine dewatering



### CIRCULATING WATER PUMPS

Fairbanks Nijhuis Vertical Mixed and Axial Flow Propeller Pumps are designed for industrial, irrigation and other applications with moderate- to high-volume fluid movement from moderate to low discharge pressure discharge.

- ◆ Excellent low NPHS requirements
- ◆ Minimum footprint - no priming required
- ◆ Easily adaptable to various design codes
- ◆ Can be modified for changing hydraulic conditions
- ◆ Less wear due to lower operating speeds



# GENERAL SERVICE PUMPS

## END SUCTION PUMPS

Aurora End Suction Pumps offer a comprehensive lineup of models to meet a variety of General Industrial applications.

- ◆ Offered in vertical or in-line mounting
- ◆ Flanged and threaded connections available, depending on model



## VERTICAL MULTISTAGE PUMPS (PVMs)

Aurora and Fairbanks Nijhuis Vertical Multistage Pumps (PVMs) are suitable for water and lightly aggressive slurries. A versatile selection of construction materials is available to maximize performance and dependability.

- ◆ Retrofits easily in existing and new installations, reducing valuable downtime
- ◆ Includes cartridge mechanical seal which can be replaced easily without dismantling the pump
- ◆ HPs range from 1/2 to 60, depending on the brand and model



## SEWAGE PUMPS

Fairbanks Nijhuis Dry Pit Solids Handling Pumps and Pentair Hydromatic® and Pentair Myers® Submersible Solids Handling and Grinder Pumps are designed to help your pump station win against today's challenges in Industrial Wastewater transport.

- ◆ Large range of discharges, built for a variety of applications
- ◆ Many models include a premium efficient motor to help reduce energy use



## CENTRIFUGAL PUMPS

Myers Two-Stage Centrifugal Pumps are designed and built for rugged continuous duty service. This general service pump can be found in a wide variety of applications, from agricultural sprayers to commercial car washes.

- ◆ Offering heads up to 400 feet, with up to 140 GPM flow rates
- ◆ Rugged cast iron construction





# GENERAL SERVICE PUMPS

## RAW WATER INTAKE PUMPS

Fairbanks Nijhuis pumps are built to be rugged and reliable, maximize service life, and reduce power consumption.

- ◆ Available in both vertical turbine and horizontal split case models
- ◆ Designed for industrial raw water intake service

## CONDENSATE AND HEATER DRAIN PUMPS

Fairbanks Nijhuis Vertical Turbine and Split Case Pumps, and Aurora Split Case Pumps are built for the tough task of moving hot condensate efficiently and reliably.

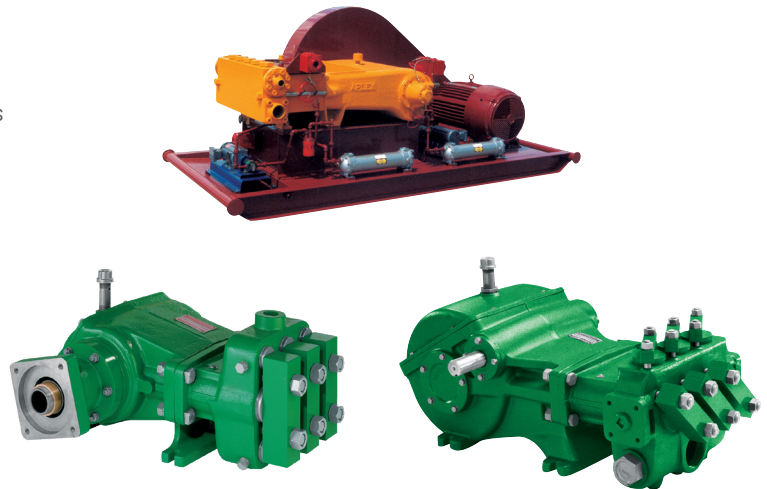
- ◆ Broad material selection available to meet condensate properties
- ◆ Available with low NPSH impellers to minimize installation costs and suction vessel length



## RECIPROCATING PUMPS

Pentair Myers Aplex and Myers Reciprocating Pumps can be customized to fit seamlessly into existing equipment. Each pump is also available with a variety of options including integral hydraulic drives, base mountings and a wide selection of auxiliary equipment to address each unique installation.

- ◆ Offering a broad product line ranging from 5 to 400 HP and pressures up to 5,500 PSI and flows to 600 GPM
- ◆ Covers applications ranging from sewer jetting to hydro excavating to waterjet machining and more



**NORTH AURORA FACILITY**  
800 Airport Road  
North Aurora, Illinois 60542  
Ph: 630.859.7000

**KANSAS CITY FACILITY**  
3601 Fairbanks Avenue  
Kansas City, Kansas 66106  
Ph: 913.371.5000

**ASHLAND FACILITY**  
1101 Myers Parkway  
Ashland, Ohio 44805  
Ph: 855.274.8947

[pentair.com](http://pentair.com)

All indicated Pentair trademarks and logos are property of Pentair. Third party registered and unregistered trademarks and logos are the property of their respective owners. Because we are continuously improving our products and services, Pentair reserves the right to change specifications without prior notice. Pentair is an equal opportunity employer.

All FM® Approvals certification marks are the sole property of FM® Approvals LLC.

UL® and the UL® logo are trademarks of UL® LLC.

©2023 Pentair. All Rights Reserved.



P11023 (02-22-23)